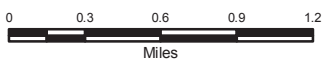
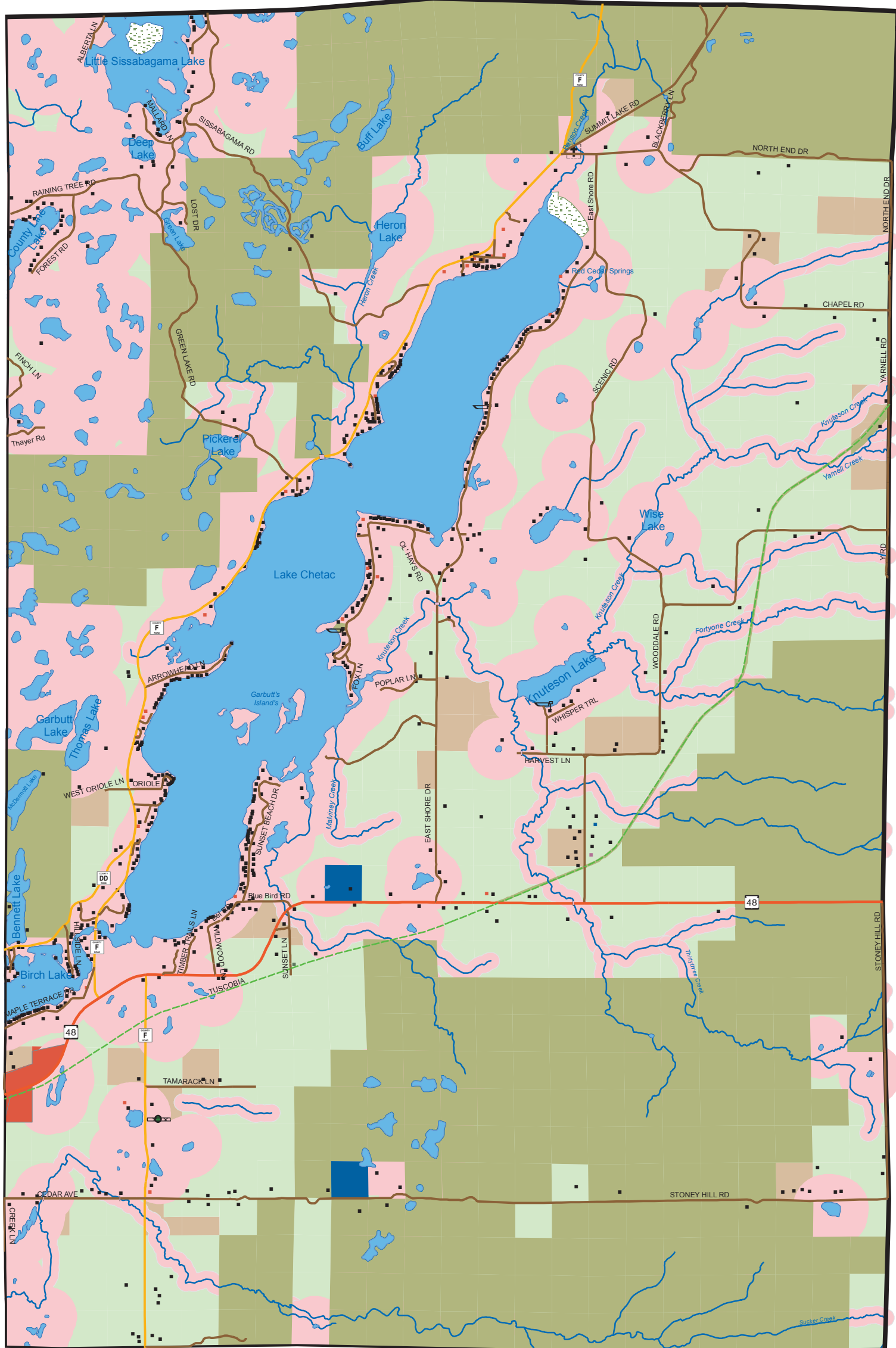


Town of Edgewater, Future Land Use Map 44



- | | |
|--|----------------------------|
| | Agriculture |
| | Commercial |
| | Conservation Preserve |
| | Forest Residential |
| | Forestry |
| | Governmental/Institutional |
| | Park & Recreational |
| | Shoreland |



Source:
Sawyer County,
Land Records Department,
and State of Wisconsin DNR.

Note:
Structure Database May 24, 2004
and last updated January 10, 2005
by Town Planning Committee.