


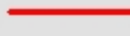


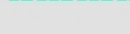

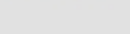
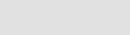


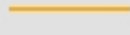

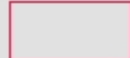
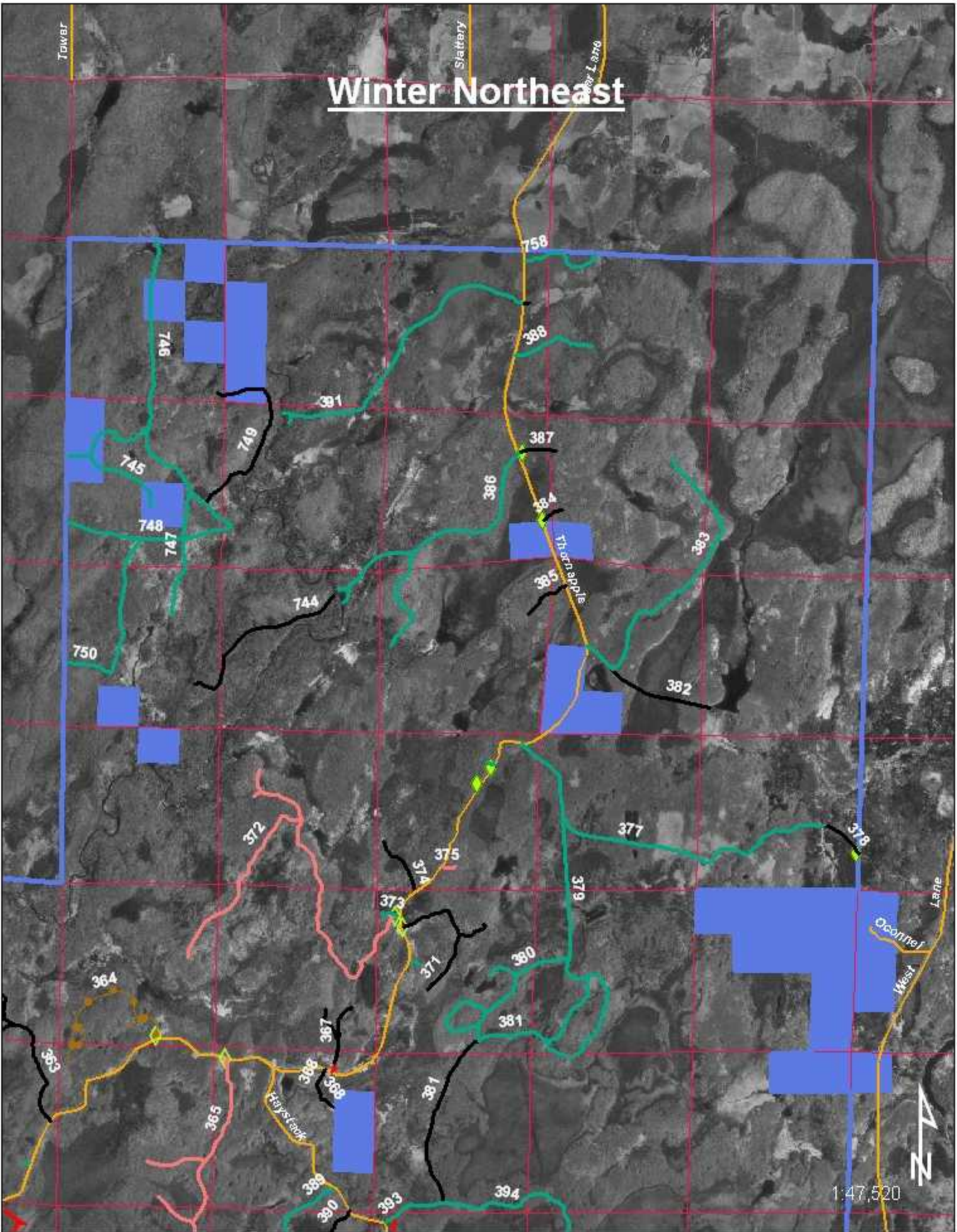


# Winter Legend

## Legend

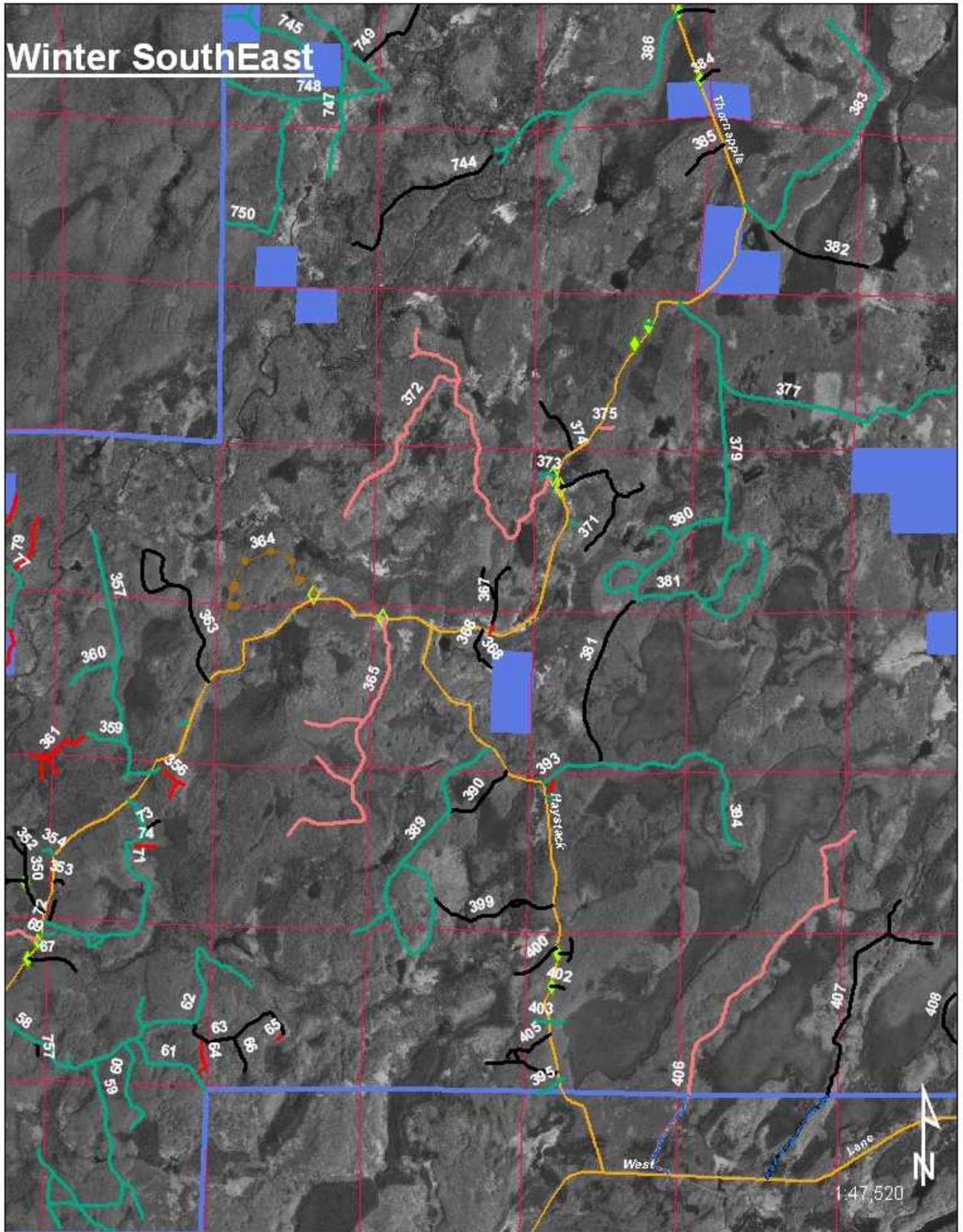
-  open access
-  limited open access
-  closed access
-  unauthorized
-  proposed\_atv
-  closed (temporary road)
-  snowmobile (open access)
-  hunter walking trail
-  DNR Limited Open Access
-  DNR Closed Access
-  berms\_w9
-  gates\_w9
-  Town Road
-  county forest boundary
-  sawyer\_sec

# Winter Northeast



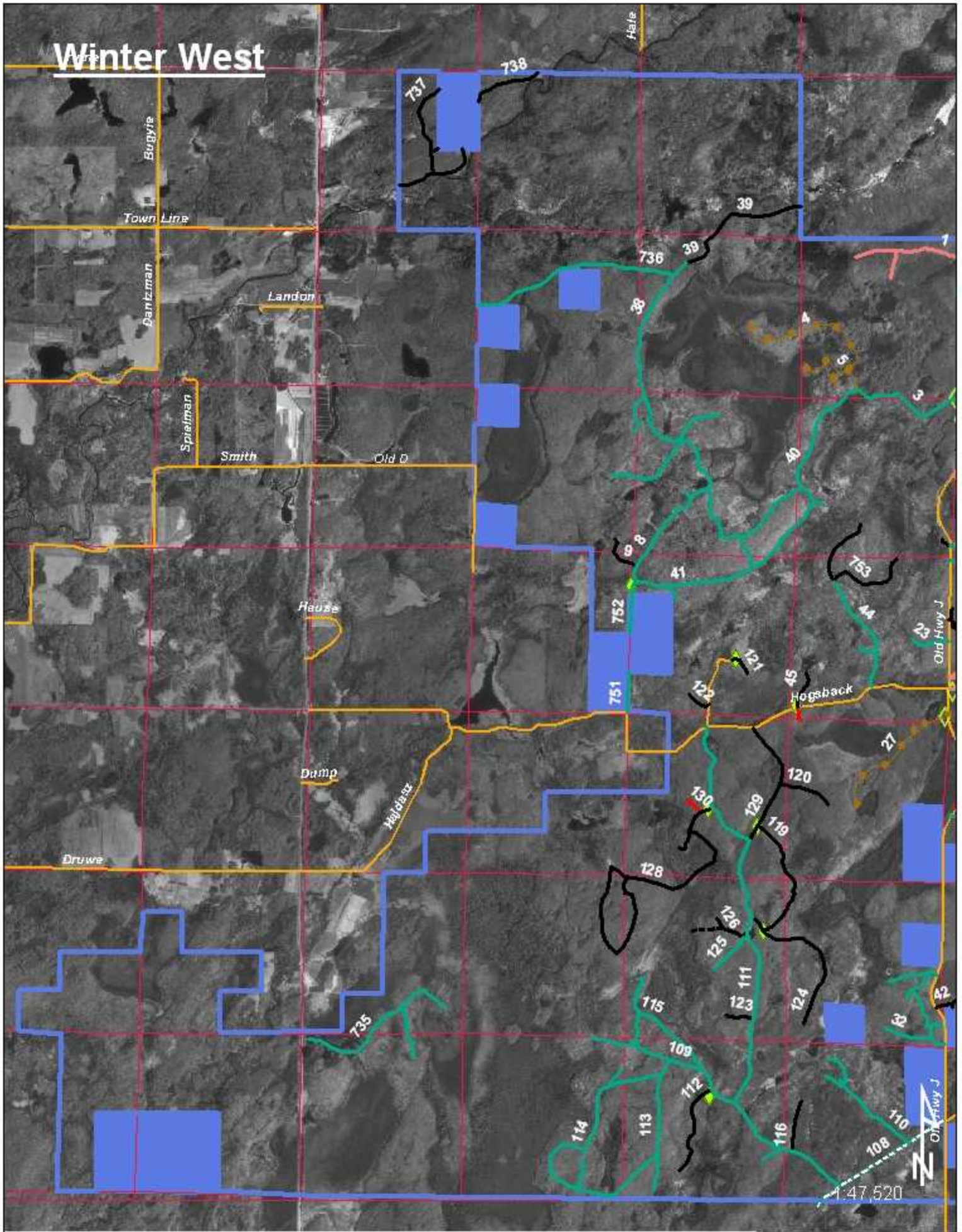
1:47,520

# Winter SouthEast



1:47,520

# Winter West



# Winter Center

